

# Higher Education in Canada

Program Viewbook | 2023



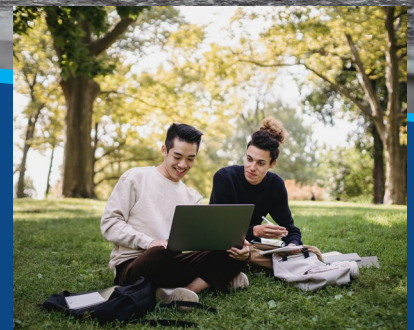
## ► ILAC Higher Education

ILAC Higher Education provides students with the opportunity to enter postsecondary education and gain public college credentials.

The partnerships combine the colleges' experience and their excellent reputation in postsecondary education, with ILAC's solid reputation as a leading language school with exciting downtown Toronto and Vancouver locations.

Georgian at ILAC or Fanshawe Toronto@ILAC programs can lead to careers in many fields, including sales, hospitality, health care, management, IT, and more!

ILAC Higher Education offers an experience that engages students and prepares them to excel in their future careers.





# Locations & Facilities

Study & live  
in beautiful  
downtown  
Toronto!



## Study in a beautiful campus in one of Canada's trendiest cities!

In Toronto, you are assured to have the true Canadian experience. Our campuses are located in the heart of downtown, close to amenities, entertainment, and nightlife.

- ▶ Our boutique campuses are second to none: upscale and steps away from landmarks and attractions. Experience Canada like never before.
- ▶ Bright and state-of-the-art buildings provide the perfect environment for learning and socializing.



# Toronto, Ontario

---

- ★ Toronto is home to citizens representing over 200 different ethnic and national backgrounds.
- ★ The Toronto Public Library is the largest neighbourhood-based library system in the entire world.
- ★ Toronto is Canada's largest center of education, research, and innovation.
- ★ Consistently ranks as one of the best cities in world to live in.
- ★ Toronto is the largest city in Canada, and the 4th-largest city in North America.





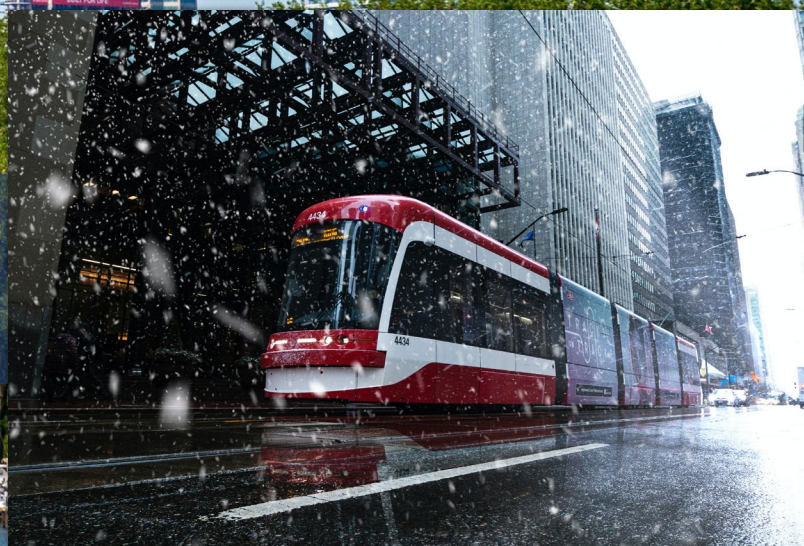
More options for  
part-time jobs and  
co-op placements.



More choices  
for shopping,  
entertainment, food &  
cultural experiences.



Extensive public  
transportation  
network.







**DOWNTOWN  
TORONTO**

## ► Business & IT Programs

Georgian College offers more than a postsecondary education in Central Ontario, it's built a reputation for providing an experience that engages students and prepares them to excel in their future careers. Georgian at ILAC offers:

- Enrolment in Georgian's excellent programs hosted at ILAC's beautiful Toronto campus.
- Career opportunities include: Sales, Management, Team Lead, Finance, Consulting, Entrepreneurial and more!
- Access to ILAC's schedule of activities, orientation support, advisors, & counselling and more.

### **APPLY NOW!**

Visit our admissions page to get started on your next big adventure!

Go to: **[www.georgianatilac.com](http://www.georgianatilac.com)**

## Business Diploma

### DIPLOMA

Students in this **diploma program** acquire a foundational knowledge of business, with a focus on managing people and processes. Courses in economics, accounting, marketing, & human resources lay groundwork for careers.

- ▶ Fall ▶ Winter ▶ Summer
- ▶ 4 Semesters (2 Years)

#### Entry Requirements

- OSSD or equivalent with: Grade 12 English (C or U)
- Any Grade 11<sup>1</sup> or 12 Mathematics (C, M or U)
- ILAC Pathway 3.2 or IELTS 6.0 with no band less than 5.5 (SDS program – IELTS score 6.0, no band less than 6.0)<sup>2</sup>

#### Accreditations

The Canadian Institute of Management (CIM) has accredited the BUSN program delivered by Georgian at ILAC.



## Business Diploma with Co-op

AVAILABLE FALL 2023

### CO-OP DIPLOMA

Students in this **diploma co-op program** build a solid foundation in business. Valuable hands-on experience help launch a career or take advantage of pathways to further studies.

- ▶ Fall ▶ Winter ▶ Summer
- ▶ 4 Semesters  
(2 Years with Co-op)

#### Entry Requirements

- OSSD or equivalent with: Grade 12 English (C or U)
- Any Grade 11<sup>1</sup> or 12 Mathematics (C, M or U)
- ILAC Pathway 3.2 or IELTS 6.0 with no band less than 5.5 (SDS program – IELTS score 6.0, no band less than 6.0)<sup>2</sup>

#### Accreditations / Co-op

The Canadian Institute of Management (CIM) has accredited the BUSG program delivered by Georgian at ILAC. This program includes two work experience co-op terms. (Co-op duration: 560 hours total per co-op term)



## Computer Programming with Co-op

### CO-OP DIPLOMA

In this **diploma co-op program**, design and build applications for desktop, mobile and web.

- ▶ Fall ▶ Winter ▶ Summer
- ▶ 4 Semesters  
(2 Years with Co-op)

#### Entry Requirements

- OSSD or equivalent + Grade 12 English (C or U) & any Grade 12 Mathematics (C or U)
- ILAC Pathway 3.2 or IELTS 6.0 with no band less than 5.5 (SDS program – IELTS score 6.0, no band less than 6.0)<sup>2</sup>

#### Co-op

This program includes a work experience co-op term. (Co-op duration: 35/hrs per week, 14 weeks)

## Computer Systems Technician - Networking with Co-op

### CO-OP DIPLOMA

In this **diploma co-op program**, manage the IT systems of an organization as a network technician.

- ▶ Fall ▶ Winter ▶ Summer
- ▶ 4 Semesters  
(2 Years with Co-op)

#### Entry Requirements

- OSSD or equivalent + Grade 12 English (C or U) & any Grade 12 Mathematics (C or U)
- ILAC Pathway 3.2 or IELTS 6.0 with no band less than 5.5 (SDS program – IELTS score 6.0, no band less than 6.0)<sup>2</sup>

#### Co-op

This program includes a work experience co-op term. (Co-op duration: 35/hrs per week, 14 weeks)

<sup>1</sup> Minimum of 60% in Grade 11 College or University level Mathematics. (MBF3C or MCF3M)

<sup>2</sup> Other language proficiency tests accepted include Duolingo (until Dec. 31, 2023), TOEFL, CAE and TOEIC

<sup>3</sup> Applicants who do not possess the above academic requirement maybe considered upon submission of a resume and reference letters which demonstrate relevant work experience.

## Office Administration - Health Services

### DIPLOMA

In this **diploma program**, acquire the knowledge and specialized skills required to successfully perform in the administrative health field.

- ▶ Fall ▶ Winter ▶ Summer
- ▶ 4 Semesters (2 Years)

#### Entry Requirements

- OSSD or equivalent with: Grade 12 English (C or U)
- ILAC Pathway 3.2 or IELTS 6.0 with no band less than 5.5 (SDS program – IELTS score 6.0, no band less than 6.0)<sup>2</sup>

#### Work Integrated Learning

In the fourth semester of this program students may have the opportunity to participate in work integrated learning. Note: A work permit is required for international students wishing to pursue this opportunity.

## Global Business Management

### GRADUATE CERTIFICATE

This **graduate certificate program** is designed to prepare university and college graduates from a wide range of educational and cultural backgrounds to work as managers in international and domestic businesses of various sizes.

- ▶ Fall ▶ Winter ▶ Summer
- ▶ 4 Semesters (2 Years)

#### Entry Requirements

- Post-secondary diploma or degree, or equivalent
- Education or experience in a business setting is desirable.
- ILAC Pathway 3.2 or IELTS 6.5 with no band less than 6.0 (same for SDS program)<sup>2</sup>

#### Accreditations

Georgian at ILAC is an accredited education partner of the Forum for International Trade Training (FITT), the world's leading global business training and certification provider.



## Project Management

### GRADUATE CERTIFICATE

In this **graduate certificate program**, study the complexity of industry's labour and entrepreneurial needs, which requires managers who can work with in a variety of settings and in cross-functional and multi-disciplinary teams.

- ▶ Fall ▶ Winter ▶ Summer
- ▶ 2 Semesters (1 Year)

#### Entry Requirements

- Post-secondary diploma or degree, or equivalent<sup>3</sup>
- ILAC Pathway 3.2 or IELTS 6.5 with no band less than 6.0 (same for SDS program)<sup>2</sup>

#### Accreditations

PMI is the world's leading association for those who consider project, program or portfolio management their profession.



## Human Resources Management with Co-op

### CO-OP GRADUATE CERTIFICATE

Graduates from this **graduate certificate co-op program** will be ready to perform all human resources functions within the business environment. Demonstrating the skills and competencies to collaborate with others and display initiative.

- ▶ Fall ▶ Winter ▶ Summer
- ▶ 2 Semesters  
(1 Year with co-op)

#### Entry Requirements

- Post-secondary diploma or degree, or equivalent<sup>3</sup>
- ILAC Pathway 3.2 or IELTS 6.5 with no band less than 6.0 (same for SDS program)<sup>2</sup>

#### Co-op

This program includes a work experience co-op term.  
(Co-op duration: 35/hrs per week, 14 weeks)

<sup>1</sup> Minimum of 60% in Grade 11 College or University level Mathematics.

<sup>2</sup> Other language proficiency tests accepted include Duolingo (until Dec. 31, 2023), TOEFL, CAE and TOEIC

<sup>3</sup> Applicants who do not possess the above academic requirement maybe considered upon submission of a resume and reference letters which demonstrate relevant work experience.



## Business Management

### GRADUATE CERTIFICATE

Graduates of this **graduate certificate program** will be prepared for the field of business.

- ▶ Fall ▶ Winter ▶ Summer
- ▶ 2 Semesters (1 Year)

#### Entry Requirements

- Post-secondary diploma or degree, or equivalent<sup>3</sup>
- ILAC Pathway 3.2 or IELTS 6.5 with no band less than 6.0 (same for SDS program)<sup>2</sup>

#### Career Outcomes

Graduates can work in a broad range of domestic and international employment settings, including manufacturers, market research companies, educational institutions, retailers, and more.

## Marketing Management

### GRADUATE CERTIFICATE

Graduates of this **graduate certificate program** will be prepared for exciting careers in the field of marketing.

- ▶ Fall ▶ Winter ▶ Summer
- ▶ 2 Semesters (1 Year)

#### Entry Requirements

- Post-secondary diploma or degree, or equivalent<sup>3</sup>
- ILAC Pathway 3.2 or IELTS 6.5 with no band less than 6.0 (same for SDS program)<sup>2</sup>

#### Career Outcomes

Graduates of this program may be employed by or initiate entrepreneurial start-ups or will be prepared to work in a variety of business-focused environments and middle-management roles.

## Supply Chain Management - Global

### GRADUATE CERTIFICATE

Graduates of this **graduate certificate program** will prepare to become skilled leaders in logistics and the supply chain.

- ▶ Fall ▶ Winter ▶ Summer
- ▶ 2 Semesters (1 Year)

#### Entry Requirements

- Post-secondary diploma or degree, or equivalent<sup>3</sup>
- ILAC Pathway 3.2 or IELTS 6.5 with no band less than 6.0 (same for SDS program)<sup>2</sup>

#### Career Outcomes

Graduates of this program are prepared to work in a broad range of domestic and international employment settings within the supply chain.



<sup>1</sup> Minimum of 60% in Grade 11 College or University level Mathematics.

<sup>2</sup> Other language proficiency tests accepted include Duolingo (until Dec. 31, 2023), TOEFL, CAE and TOEIC

<sup>3</sup> Applicants who do not possess the above academic requirement maybe considered upon submission of a resume and reference letters which demonstrate relevant work experience.





**DOWNTOWN  
TORONTO**

## ► Hospitality & Community Studies Programs

Fanshawe College and ILAC International College are working together in a new partnership to offer post-secondary programs to international students in downtown Toronto. Advantages include:

- More options for part-time jobs and co-op placements
- Access to many different cultures in the city
- Smaller classrooms
- Extensive public transportation network
- Great opportunities for connections and networking

### **APPLY NOW!**

Visit our website to get started on your next big adventure!

Go to: **[www.torontofanshawe.ca](http://www.torontofanshawe.ca)**



## Hospitality – Hotel and Resort Services Management (Co-op)

**CO-OP DIPLOMA**

Master the art of management & administration and food and beverage service in this **diploma co-op program**.

- ▶ Fall ▶ Winter ▶ Summer
- ▶ 4 Semesters  
(2 Years with co-op)

### Entry Requirements

- Grade 12 English and Grade 11 Math or equivalent
- ILAC Pathway 3.3 or IELTS 6.0 with no band less than 5.5 (SDS program – IELTS score 6.0, no band less than 6.0)<sup>1</sup>

### Co-op

Gain work experience during a full-time, paid co-op semester in a local hotel or restaurant, or at hotels and resorts across Canada. (Co-op duration: 37.5 hrs / week average, 15 weeks). Note: A work permit is required for international students wishing to pursue this opportunity.

## Developmental Services Worker

**DIPLOMA**

Prepare to be a specialist in supporting children & adults with developmental disabilities in this **diploma program**.

- ▶ Fall ▶ Winter ▶ Summer
- ▶ 4 Semesters (2 Years)

### Entry Requirements

- Grade 12 English
- ILAC Pathway 3.3 or IELTS 6.0 with no band less than 5.5 (SDS program – IELTS score 6.0, no band less than 6.0)<sup>1</sup>
- (Post-admission): Time sensitive - Standard First Aid course certificate and Basic Rescuer course certificate; evidence of good health; police record check; placement agreement

### Field Placement

Field placements (\*may work evening shifts) in community agencies and/or schools are part of the curriculum. Note: A work permit is required for international students wishing to pursue this opportunity.

## Hospitality and Tourism Operations Management

**GRADUATE CERTIFICATE**

In this **graduate certificate program**, manage the global hospitality industry, with emphasis on Canadian tourism.

- ▶ Fall ▶ Winter ▶ Summer
- ▶ 5 Semesters (2 Years)

### Entry Requirements

- 2- or 3-year college diploma or degree<sup>2</sup>
- ILAC Pathway 3.3 or IELTS 6.5 with no band less than 6.0 (same for SDS program)<sup>1</sup>

### Certificates & Internship

Opportunity to complete industry certificates such as Smart Serve – Beverage Sales & Service Training and Certified Guest Service Professional (CGSP). This program includes a 525 hour-internship component.\*

## Gerontology - Interprofessional Practice

**GRADUATE CERTIFICATE**

In this **graduate certificate program**, study geriatric mental health, cultural diversity, thanatology & therapeutic recreation.

- ▶ Fall ▶ Winter ▶ Summer
- ▶ 2 Semesters (1 Year)

### Entry Requirements

- 2- or 3-year college diploma or degree<sup>2</sup>
- ILAC Pathway 3.3 or IELTS 6.5 with no band less than 6.0 (same for SDS program)<sup>1</sup>
- (Post-admission): Time sensitive - Standard First Aid course certificate and Basic Rescuer course certificate; Evidence of Good Health; Police Record Check and Vulnerable Sector Screening, including a check of the Pardoned Sexual Offenders Database; Placement Agreement

### Field Placement

This program includes a 200-hour field placement.\*

\*Note: A work permit is required for international students wishing to pursue these opportunities.

<sup>1</sup> Fanshawe is accepting Duolingo for the programs for 2023-2024. Acceptable language proficiency tests are IELTS, TOEFL, CAEL, PTE, Cambridge English, and Fanshawe College English Language Evaluation (ELE)

<sup>2</sup> A Two- or Three-Year College Diploma, or a Degree OR Acceptable combination of related work experience and post-secondary education as judged by the College to be equivalent to the 2- or 3-year college diploma or degree. Note: Applicants may be required to submit a resume and cover letter that includes details of work experience.



## Addictions and Mental Health

### GRADUATE CERTIFICATE

Learn about addictions and mental health issues, promotion and prevention & pharmacology in this **graduate certificate**.

- ▶ Fall   ▶ Winter   ▶ Summer
- ▶ 2 Semesters (1 Year)

#### Entry Requirements

- 2- or 3-year college diploma or degree<sup>2</sup>
- ILAC Pathway 3.3 or IELTS 6.5 with no band less than 6.0 (same for SDS program)<sup>1</sup>
- (Post-admission): Time sensitive - Standard First Aid course certificate and Basic Rescuer course certificate; evidence of good health; police record check; placement agreement

#### Placement

*This program includes a 200-hour field placement\*.*

## Palliative Care

**AVAILABLE FALL 2023**

### GRADUATE CERTIFICATE

In this **graduate certificate program**, study how to support families and patients dealing with the death and dying.

- ▶ Fall   ▶ Winter   ▶ Summer
- ▶ 2 Semesters (1 Year)

#### Entry Requirements

- 2- or 3-year college diploma or degree<sup>2</sup>
- ILAC Pathway 3.3 or IELTS 6.5 with no band less than 6.0 (same for SDS program)<sup>1</sup>
- Experience in health or community service discipline recommended.

#### Recommended Personal Preparation

*This is an intensive program that deals with the very sensitive stage of life where individuals and families/supports are dealing with emotions and plans around the death and dying of a loved one. Prospective students should be prepared to manage and reflect on their own experiences, beliefs and values around the care of loved ones in the final stages of life.*



*\*Note: A work permit is required for international students wishing to pursue these opportunities.*

<sup>1</sup> Fanshawe is accepting Duolingo for the programs for 2023-2024. Acceptable language proficiency tests are IELTS, TOEFL, CAEL, PTE, Cambridge English, and Fanshawe College English Language Evaluation (ELE)

<sup>2</sup> A Two- or Three-Year College Diploma, or a Degree OR Acceptable combination of related work experience and post-secondary education as judged by the College to be equivalent to the 2- or 3-year college diploma or degree. Note: Applicants may be required to submit a resume and cover letter that includes details of work experience.

# University Pathway Program

TAKE OUR  
**FREE**  
ONLINE  
ENGLISH  
TEST [HERE](#)

ILAC Higher Education offers a convenient way to raise your English level and transition your studies to Georgian at ILAC or Fanshawe Toronto@ILAC. The university pathway program is an intensive 8- to 12-week English course open to students who want to continue their education at a Canadian public university or college.

**START IN THE 8-12 WEEK  
PATHWAY PROGRAM**

**IMPROVE YOUR ENGLISH AND  
EARN A PATHWAY CERTIFICATE**

**STUDY AT AN ILAC HIGHER  
EDUCATION INSTITUTION!**

ENGLISH BANDS	Intro		Beginner		Pre-Intermediate		Intermediate		High-Intermediate		Pre-Advanced		Advanced		High-Advanced		Proficiency	
ENGLISH LEVEL	1	2	3	4	5	6	7	8	9	10	11	12	13	14	15	16	17	
Pathway Level																		
University Pathway I											PW 1.1	PW 1.2						
University Pathway II												PW 2.1	PW 2.2					
University Pathway III														PW 3.1	PW 3.2	PW 3.3	PW 3.4	
Georgian at ILAC Programs																		
Supply Chain Management															PW 3.2			
Global Business Management															PW 3.2			
Project Management															PW 3.2			
Human Resources Management															PW 3.2			
Business Management															PW 3.2			
Marketing Management															PW 3.2			
Business Diploma															PW 3.2			
Computer Programming															PW 3.2			
Computer Systems Technician															PW 3.2			
Office Administration - Health Services															PW 3.2			
Fanshawe Toronto@ILAC Programs																		
Tourism and Hospitality Operations																PW 3.3		
Hospitality and Resort Services																PW 3.3		
Gerontology - Interprofessional Practice																PW 3.3		
Addictions and Mental Health																PW 3.3		
Developmental Services Worker																PW 3.3		
Palliative Care																PW 3.3		
English Test Scores <div>Equivalencies with ILAC English levels</div>																		
Cambridge	Intro		KET Pass		KET Merit		PET Pass		PET Merit		FCE-C		FCE-A		CAE		CPE	
TOEFL iBT					35+				55+		60+		70+				100+	

Students must still meet all other entry requirements for their desired program to be eligible for admission.





# Student Services



## CAREER SERVICES

We will help connect you to the Canadian workforce. Our dedicated and supportive teams of specialists will assist students from beginning to end in finding where they belong. Receive support for co-op placement in eligible programs, and work to earn money while studying. Enhance your resume, develop your professional network, and become job-ready!



## ACADEMIC COUNSELLING

Academic advising services are available on campus to help our students transition into the academic program and learning experience at Georgian@ILAC and Fanshawe, Toronto@ILAC. Academic advisors will support students in achieving their educational goals and planning out their future opportunities.



## GUEST SPEAKERS

ILAC Higher Education institutions regularly invite distinguished professionals from various Canadian companies to share their secrets of success and best practices in the workplace. You will gain unique perspectives and business insights that will give you a better understanding of the world today. Gain knowledge and skills that will help you be successful in the workplace, and opportunities to network with the local business community



## STUDENT HOUSING

There are several housing options to fit your profile, lifestyle and budget. You will receive support before and during your stay with either a homestay family or in a student residence. **Airport pick-up and drop-off services are also available.**



## MENTAL HEALTH SUPPORT

Our network of support staff will be available to help you through any problems you may be facing in your studies. Your health and safety is one of our top priorities, so do not hesitate to seek out our help whenever you come across an obstacle in your life.

If you have any questions about student services or want to find out more, contact us at [studentservices@georgianatilac.com](mailto:studentservices@georgianatilac.com) or [studentservices@torontofanshawe.ca](mailto:studentservices@torontofanshawe.ca)

# Testimonials

HEAR IT  
FROM OUR  
STUDENTS!

“Excellent experience,  
keep going and  
growing!”

The professors are wonderful, classes are engaging & interactive, and you can tell they really want to help us succeed. I feel that I was in the right place at the right time.”



Ivana Ristova  
GEORGIAN AT ILAC  
Project Management

“It went beyond  
my expectations!”

I’m glad the environment helped me develop more skills to improve into a better version of myself. I’m very thankful for the support from each member of the faculty.”



Cindy Geronimo  
GEORGIAN AT ILAC  
Project Management

“In just 2 weeks, it left  
me with a really good  
impression.”

The professors did a great job to keep us comfortable, but at the same time, tried to keep us involved in the class. The staff were really patient and answered all my questions.”



Victor Hugo Matos  
GEORGIAN AT ILAC  
Business Diploma

Be our next  
success story!

Apply today and you could be well on your way joining us at Georgian at ILAC or Fanshawe Toronto at ILAC and **making your dreams come true!**



This could be you!  
ILAC HIGHER ED  
Future Entrepreneur

Follow us on social media to stay updated on news,  
testimonials, events and more!

@ georgianatilac

f GeorgianatILAC

in georgian-ilac

@ fanshawe\_international

f fanshaweint

in fanshawe-international





---

**[www.georgianatilac.com](http://www.georgianatilac.com)**

**[georgian@ilac.com](mailto:georgian@ilac.com)**

**Georgian at ILAC Toronto**

425 Bloor Street East, 2nd floor,  
Toronto, ON, Canada M4X 1L7

T: +1 (416) 961 5151  
F: +1 (416) 961 9267

GEORGIAN AT ILAC DESIGNATED LEARNING  
INSTITUTE NUMBER: O145776118272

**[www.torontofanshawe.ca](http://www.torontofanshawe.ca)**

**[info@torontofanshawe.ca](mailto:info@torontofanshawe.ca)**

**Fanshawe Toronto@ILAC**

655 Bay Street,  
Toronto, ON, Canada M5G 2K4

T: +1 (416) 961 5151  
F: +1 (416) 961 9267

FANSHAWE TORONTO DESIGNATED LEARNING  
INSTITUTE NUMBER: O271444185572

---

**Dream  
Big.**